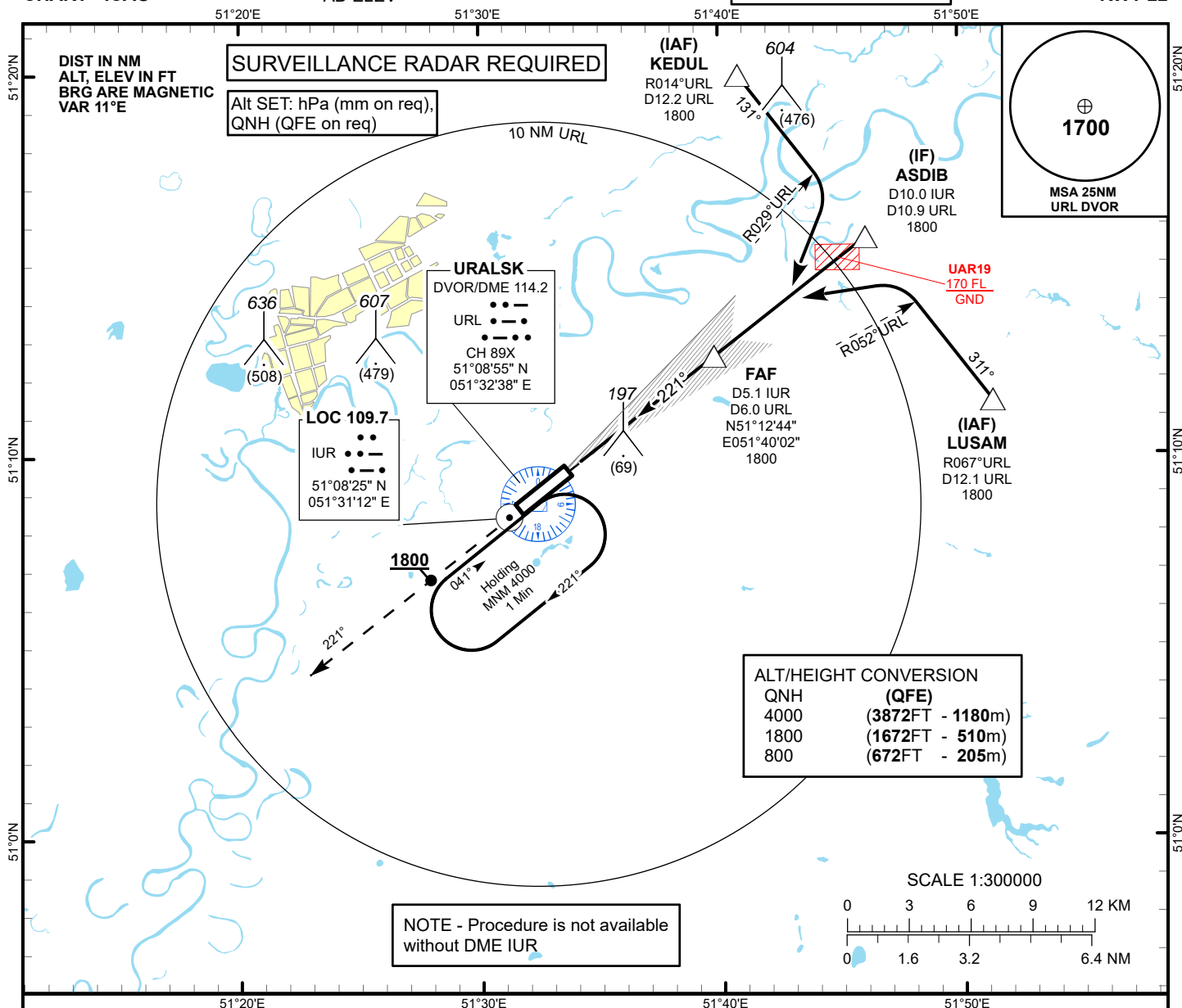


INSTRUMENT
APPROACH
CHART - ICAO

AERODROME ELEV 128 FT
HEIGHTS RELATED TO
AD ELEV

URALSK TOWER 119.7
URALSK ATIS (EN) 124.8
URALSK ATIS (RU) 134.9

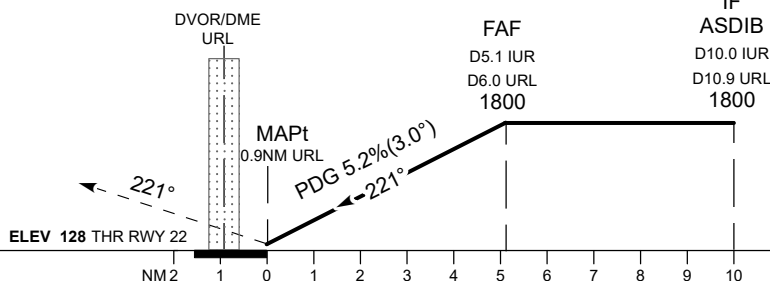
URALSK
LOC/DME
RWY 22



MISSSED APPROACH

Climb on track 221° to 1800 ft.
After passing 1800 ft radar
vectoring will be provided.

TRANSITION ALT
10000



Aircraft Category		A	B	C	D	DIST to THR DME IUR	NM	1	2	3	4	5	5.1
Straight-in Approach OCA/H						DME URL	NM	1.9	2.9	3.9	4.9	5.9	6.0
	LLZ (GP INOP)	510(380)	510(380)	510(380)	510(380)	ALTITUDE	FT	495	814	1132	1451	1769	1800
						HEIGHT	FT	367	686	1004	1323	1641	1672
DME IUR ZERO RANGED TO THR RWY 22													
Aerodrome Operating Minima DH ft x RVR(CMV)	LLZ (GP INOP)					GS	Kt	80	100	120	140	160	180
						Desc.Rate (5.2%)	ft/min	420	530	630	740	840	950
						FAF-MAPt(5.1NM)	min:sec	3:50	3:04	2:33	2:11	1:55	1:42

URALSK
LOC/DME

AERONAUTICAL DATA TABULATION

LOC/DME approach to RWY22 from KEDUL, ASDIB, LUSAM	
Fix/point	Coordinates
DVOR/DME URL	51° 08' 55.2"N 051° 32' 37.6"E
(FAF) D5.1 IUR, D6.0 URL	51° 12' 44.3"N 051° 40' 01.5"E
ASDIB (IF) D10.0 IUR, D10.9 URL	51° 15' 43.6"N 051° 46' 09.5"E
KEDUL (IAF) R014°, D12.2 URL	51° 19' 58.7"N 051° 40' 51.6"E
LUSAM (IAF) R067°, D12.1 URL	51° 11' 28.3"N 051° 51' 26.5"E
THR RWY22	51° 09' 35.20"N 051° 33' 34.95"E
LOC IUR	51° 08' 24.8"N 051° 31' 11.5"E